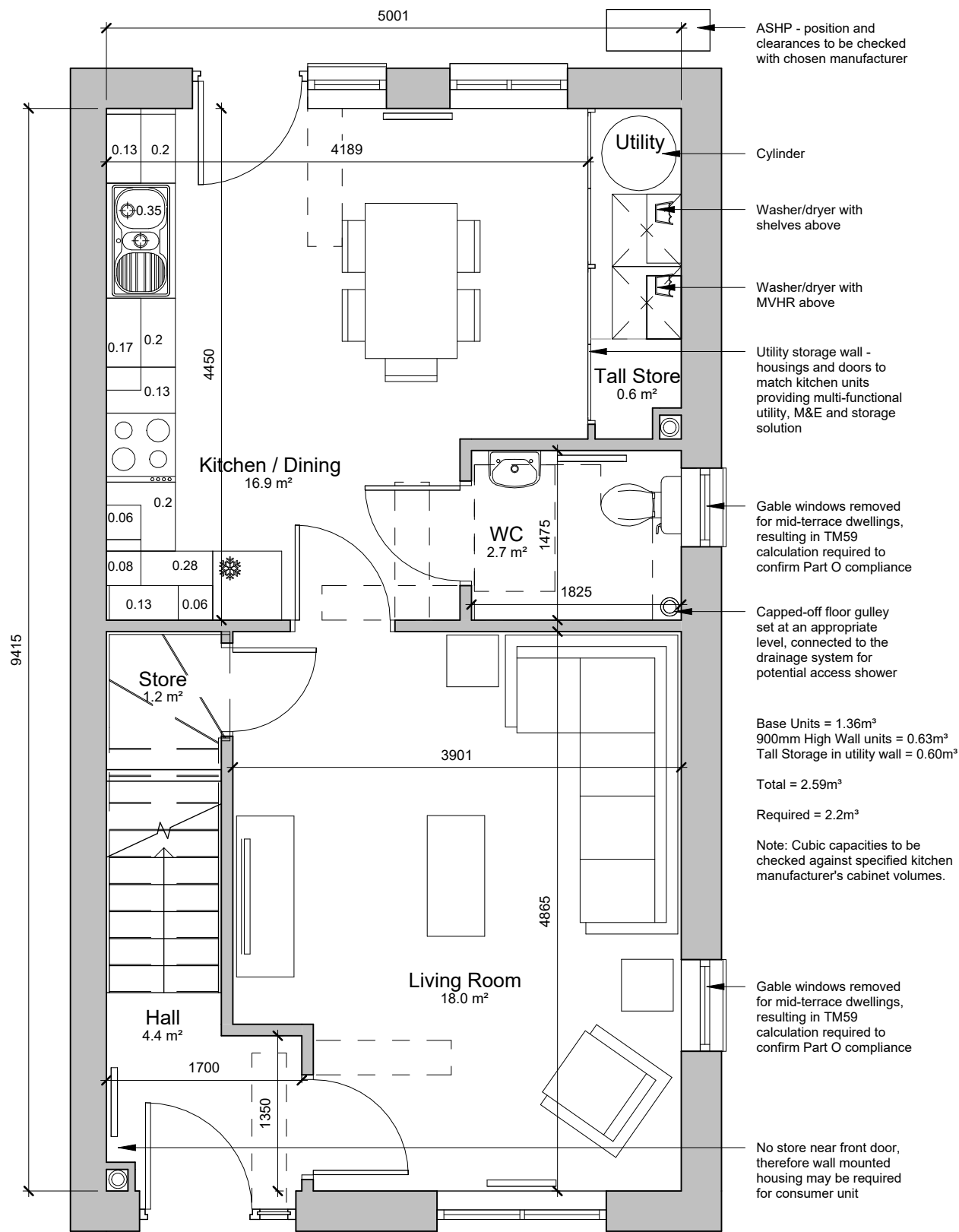
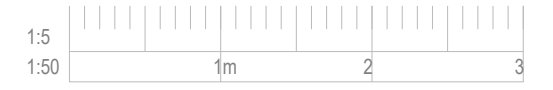


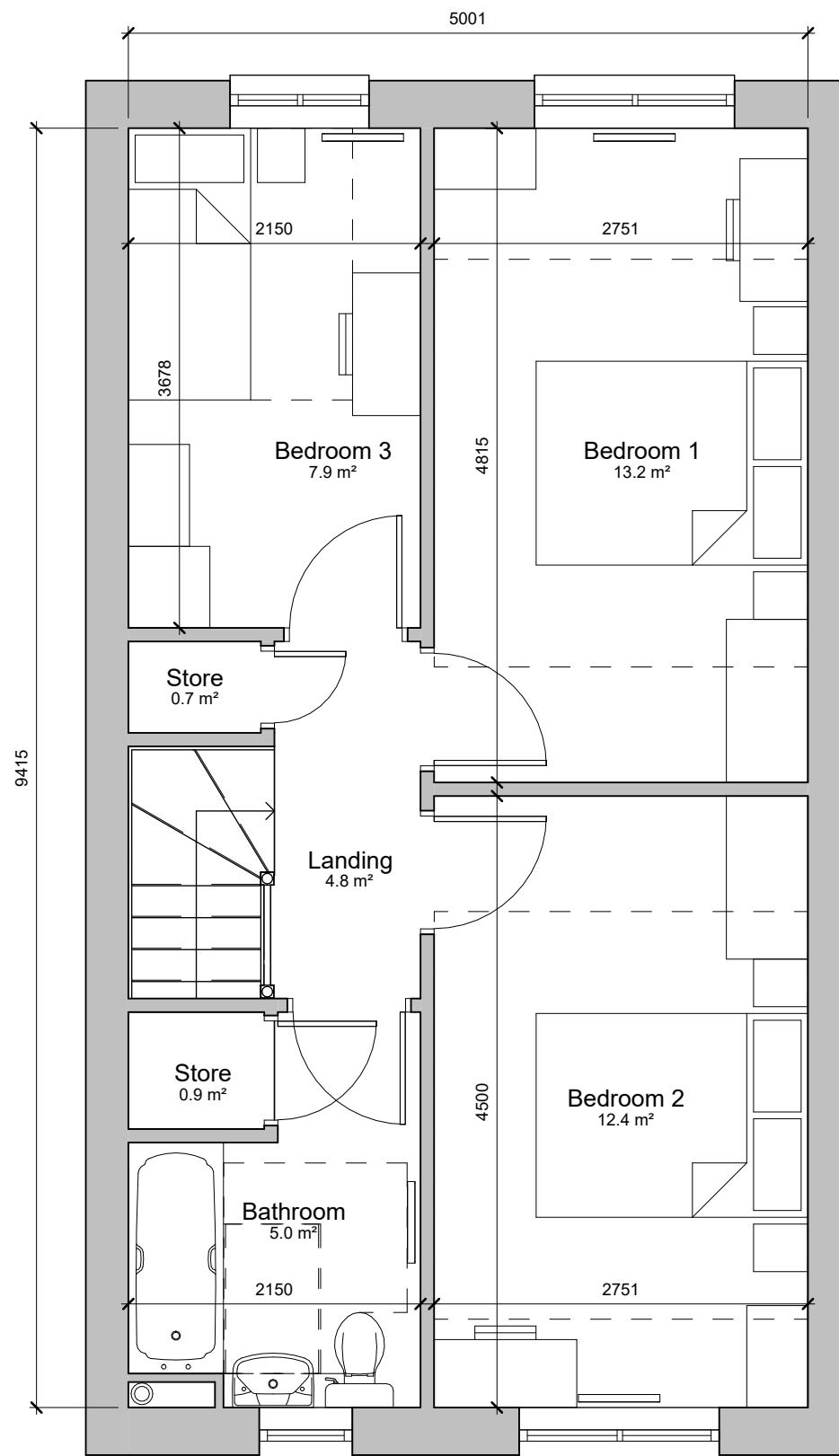
© Bowker Sadler Partnership Limited  
 This drawing is the subject of copyright which vests in Bowker Sadler Partnership Limited. It is an infringement of copyright to reproduce this drawing, by whatever means, including electronic, without the express written consent of Bowker Sadler Partnership Limited which reserves all its rights. Bowker Sadler Partnership Limited asserts its rights to be identified as the author of this design

- Drawing not to be scaled
- Report Errors and Omissions to the Architect.
- Check all dimensions on site
- Drawing to be read in conjunction with the Health and Safety Plan and all relevant Risk Assessments



## Ground Floor Plan

1 : 50



## First Floor Plan

1 : 50

Gross Internal Area		
House Type	Level	Area
3B5P NDSS	00 GF Level	47.1 m <sup>2</sup>
3B5P NDSS	01 FF Level	47.1 m <sup>2</sup>
		94.2 m <sup>2</sup>

Storage Areas	
Name	Area
Store	1.2 m <sup>2</sup>
Store	0.9 m <sup>2</sup>
Store	0.7 m <sup>2</sup>
	2.7 m <sup>2</sup>

Note:  
 Opening sizes as shown are indicative and designed to reflect Building Regulation compliance via the Part O Simplified method. As such treatment of individual apertures with regards to opaque, glazed and opening elements is subject to a detailed assessment of each scheme on a site by site and/or plot by plot basis under the AD O Building Regulations requirements.

Rev.	Date	Drn.	Chkd.

# Bowker Sadler

Hatherlow House, Hatherlow, Romiley, Stockport, SK6 3DY  
 0161 406 7333 office@bowker-sadler.co.uk www.bowker-sadler.co.uk

Project  
**ICN House Types**

Client  
**Great Places Housing Group**

Drawing  
**3B5P - NDSS - M4(2)**

Scale	Sheet Size	Drawn	Checked	Date
1 : 50	@ A3	KLM	CL	12/10/2023

Project No.	Originator	Zone	Level	Form Discipline Number	Revision
<b>23-030</b>	<b>BSA</b>				<b>A - 0303</b>

Status

Information